

Universidad Nacional Autónoma de México

Colegio de Ciencias y Humanidades  
Plantel Sur

“La imagen, recurso necesario para la enseñanza de la Historia bajo una perspectiva basada en el presente”

César Oswaldo Moctezuma García

Profesor de Historia Universal Moderna y Contemporánea II

## Unidad II

# GUERRAS, REVOLUCIÓN SOCIALISTA Y CRISIS (1914-1945)

### Objetivo general

Conocer las causas (pasado), el proceso (pasado- presente) y las consecuencias (presente-futuro) de la crisis capitalista de 1929

#### Aprendizaje

El alumno:

Reflexionará sobre las repercusiones de las crisis económicas que han sido subsecuentes en el sistema capitalista actual

#### Temática de sesión

La crisis económica capitalista de 1929

Subtema: (presente)

Desempleo

El jueves 24 de octubre de 1929, se produjo el crash de la bolsa de Wall Street.

**Definición:**

- Un **crash bursátil** (o crack en Bolsa) es un repentino colapso de las valoraciones de una clase de activos, tales como las acciones en un mercado financiero, que se produce a raíz de órdenes de venta masivas.

# BROOKLYN DAILY EAGLE

And Complete Long Island News

LATE NEWS  
WALL STREET  
1-12 PRICES ★★

For single copy, 10c.  
Subscription price, 10c per copy.  
Published daily, except on Sundays and public holidays.  
Published by The Brooklyn Daily Eagle, Inc., 100 Nassau St., New York 1, N. Y.

THIS YEAR—No. 200

NEW YORK CITY, THURSDAY, OCTOBER 24, 1929.

\*\*\*\*\*

52 PAGES

THIRD CLASS

# WALL ST. IN PANIC AS STOCKS CRASH

## Attempt Made to Kill Italy's Crown Prince

### STOCKS CRASH IN RUSH TO SELL; BILLIONS LOST

Morgan, Mitchell Reeling  
Steads in Effort to  
Check Rush to Unload

Wall Street was in a panic today, with an estimated 25 to 30 points in depression today. When market closed a basket of 100 shares of American stocks, which had been selling last night for 100, had advanced the situation had gotten beyond them.

Charles A. Mitchell, chairman of the National Life Bank, was conferring in the office of J. P. Morgan & Co. in New York, and other leading bankers were there.

It was also confirmed the Morgan partners had been talking to investors with a P. Morgan in front of an assembly.

It was further confirmed that some leading banks had been talking to other investors.

There seemed to be some confusion about the situation today, but it was generally believed that the situation had gotten beyond them.

## High Duty Group Gave \$700,000 to Coolidge Drive

Grandy Agrees Rates Went Up Due to His Activities as Propagandist. Focus Men Lobbying to 'Carry Out Voters' Wish'

By MORSE STEVENS  
Washington, Oct. 24.—Joseph H. Grandy, British manufacturer who admitted to the fees lobbying to the repeal of a protective tariff, testified before the Senate Tariff Committee today that he raised \$700,000 for President Coolidge's campaign in 1928 and that most of the money came from the United States.

Grandy testified before the Senate Tariff Committee today that he raised \$700,000 for President Coolidge's campaign in 1928 and that most of the money came from the United States.

He testified that he was in the office of J. P. Morgan & Co. in New York, and other leading bankers were there.

It was further confirmed that some leading banks had been talking to other investors.

There seemed to be some confusion about the situation today, but it was generally believed that the situation had gotten beyond them.

### FOR MORE LOBBYISTS



JOSEPH H. GRANDY

## PIECE OF PLANE LIKE DITEMAN'S IS FOUND AT SEA

Black and Orange Wreckage Indicates Daring Flier Went to Death

WASHINGTON, Oct. 24.—A piece of a plane, believed to be the wreckage of the plane in which Diteman was killed, was found at sea today.

The wreckage was found by a fishing boat off the coast of New York.

It was further confirmed that some leading banks had been talking to other investors.

There seemed to be some confusion about the situation today, but it was generally believed that the situation had gotten beyond them.

## FEAR 52 PERISHED IN LAKE MICHIGAN; FERRY IS MISSING

Wreckage Picked Up Indicates Craft Was Down With All Aboard

WASHINGTON, Oct. 24.—A search party for a missing ferry in Lake Michigan today reported that they had picked up wreckage that indicated the ferry was down with all aboard.

The wreckage was found by a fishing boat off the coast of New York.

It was further confirmed that some leading banks had been talking to other investors.

There seemed to be some confusion about the situation today, but it was generally believed that the situation had gotten beyond them.

## Hollywood Fire Destroys Films Worth Millions

Consolidated Studios Are Scent by Flames Fatal to One-Master Pictures Burned Include Many New Talcott Productions

HOLLYWOOD, Oct. 24.—A fire that broke out in the Consolidated Studios today destroyed films worth millions of dollars.

The fire was caused by a short circuit in the wiring.

It was further confirmed that some leading banks had been talking to other investors.

There seemed to be some confusion about the situation today, but it was generally believed that the situation had gotten beyond them.

## ASSASSIN CAUGHT IN BRUSSELS MOB; PRINCE UNHURT

Royal Sutor Was About to Lay Wreath on Six-Member Soldiers' Tomb

BRUSSELS, Oct. 24.—An assassin was caught in a mob in Brussels today. The prince was unharmed.

The assassin was caught in a mob in Brussels today. The prince was unharmed.

It was further confirmed that some leading banks had been talking to other investors.

There seemed to be some confusion about the situation today, but it was generally believed that the situation had gotten beyond them.

### ATTEMPT MADE ON LIFE



ITALY'S CROWN PRINCE

### Consolidated Studios Are Scent by Flames Fatal to One-Master Pictures Burned Include Many New Talcott Productions

HOLLYWOOD, Oct. 24.—A fire that broke out in the Consolidated Studios today destroyed films worth millions of dollars.

ITALY'S CROWN PRINCE

## Princess, Deeply Mourned, Falls Into France's Arms and Kisses Him

PARIS, Oct. 24.—A princess, deeply mourned, fell into the arms of a man and kissed him.

It was further confirmed that some leading banks had been talking to other investors.

There seemed to be some confusion about the situation today, but it was generally believed that the situation had gotten beyond them.

### CARNEGIE CHARGE OF PAID ATHLETES ROUSES COLLEGES

COLLEGE ATHLETES

### HOOVER'S TRAIN HALTED BY AUTO PLACED ON RAILS

HOOVER'S TRAIN

### WARDER SOUGHT TO KEEP SEA TRIP

WARDER SOUGHT

### SOMERS NAMED AS HEAD OF NEW

SOMERS NAMED

# CAUSAS DE LA GRAN DEPRESIÓN

**INCREMENTO DEL  
ENDEUDAMIENTO**

**+**

**ESPECULACIÓN  
BURSÁTIL**

**+**

**BENEFICIOS RÁPIDOS Y  
FÁCILES**

**=**

**C  
R  
I  
S  
I  
S  
  
1  
9  
2  
9**

**=**

**DESPLOME DE LA  
BOLSA DE NUEVA YORK**

**+**

**LA PÉRDIDA  
VERTIGINOSA DEL  
VALOR DE LAS  
ACCIONES ALLÍ  
COTIZADAS**

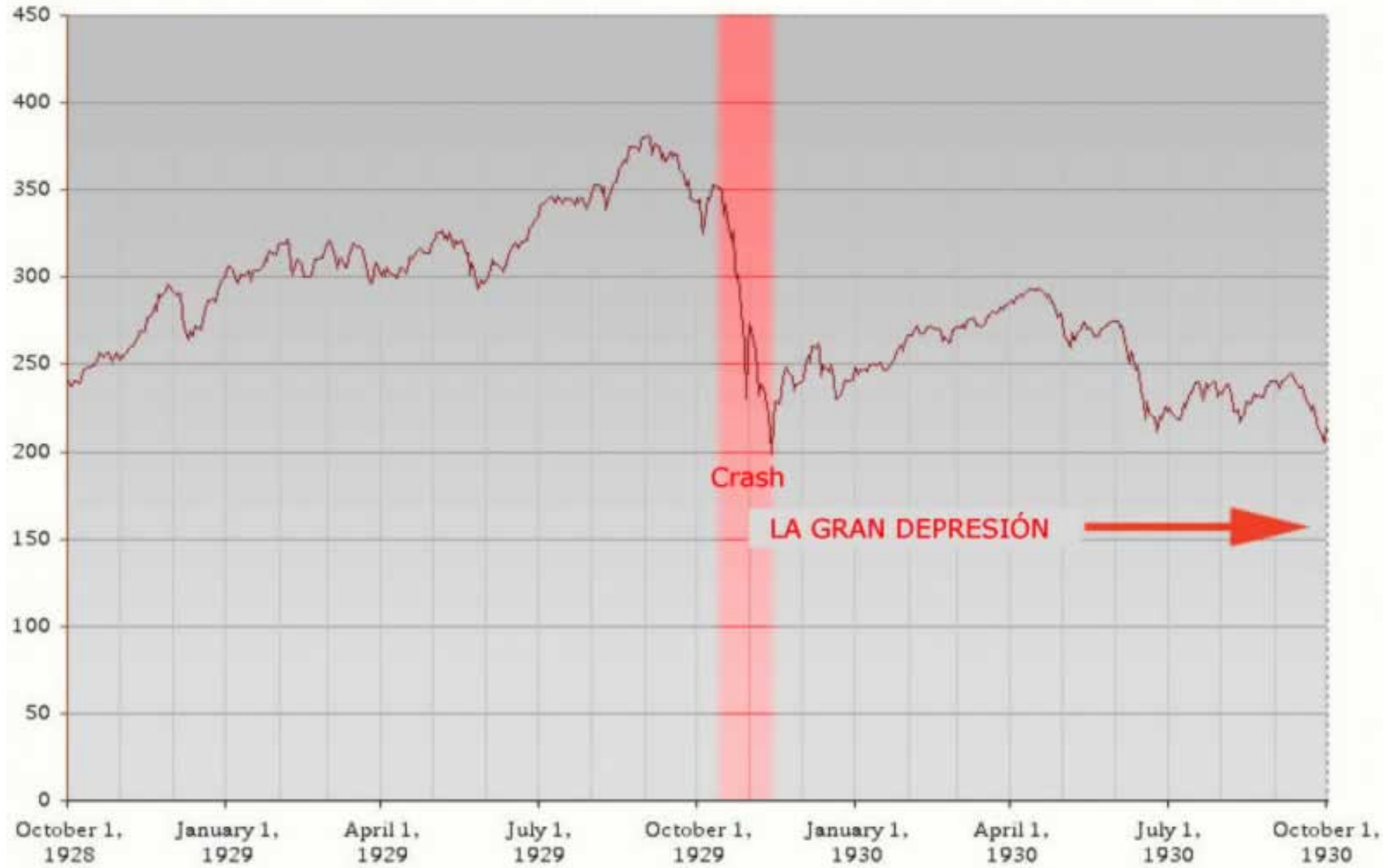
**+**

**BANCOS QUE  
ACENTUABAN  
DESCONFIANZA EN  
SU CAPACIDAD DE  
REEMBOLSO A  
DEPOSITANTES**



Una multitud aguarda para retirar sus depósitos

El crash bursátil más famoso y devastador fue el que se produjo a finales de Octubre de 1929, con caídas enormes en el precio de las acciones durante varios días sucesivos, lo que daría lugar posteriormente a lo que se conoce como GRAN DEPRESIÓN





# Gran Depresión

fue una crisis económica mundial iniciada en octubre de 1929, y que se prolongó durante toda la década de 1930, siendo particularmente intensa hasta 1934. se inició en Estados Unidos tras una década de crecimiento económico, incremento del endeudamiento y especulación bursátil, con beneficios rápidos y fáciles.

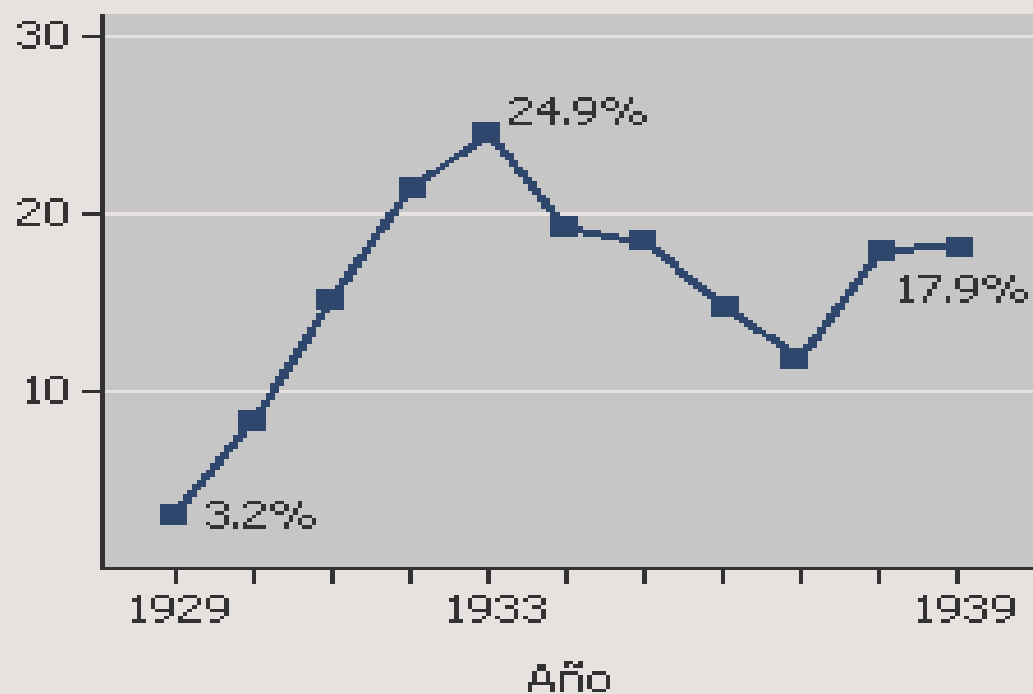
# CONSECUENCIAS

- Una década de deterioro del nivel de vida.
- Enormes cifras del desempleo.
- Trabajadores vagabundos deambulando de un estado a otro huyendo de la miseria y en pos de la supervivencia.
- Las inversiones se paralizaron.
- Las empresas tuvieron que cerrar sus puertas.
- Penuria en el campo.
- La pobreza no alcanzó solo a campesinos y obreros, sino que se extendió a empleados, profesionales y capitalistas arruinados.
- El comercio internacional se vio profundamente afectado.
- Se afectan los ingresos personales, ingresos fiscales, los precios y los beneficios empresariales.



**DESEMPLEO DURANTE LA GRAN DEPRESIÓN**

Desempleo  
(porcentaje de población activa)



Fuente: Estadísticas históricas de Estados Unidos

## DESEMPLEO DURANTE LA GRAN DEPRESIÓN



**DESEMPLEO DURANTE LA GRAN DEPRESIÓN**

El registro fotográfico fue fiel testigo de la miseria provocada por la gran depresión.



# Replantear el rol del Estado en la economía de una Nación

**Marzo 1933 asume la presidencia de los Estados Unidos Franklin Roosevelt.**

*Objetivo*

*Reconstruir la economía de su país*

**REGULACIÓN DE LA  
ECONOMÍA  
FAVORECIENDO  
INVERSIONES**



**FAVORECER CRÉDITO Y  
CONSUMO**



**GASTO PÚBLICO  
ORIENTADO A LA  
EDUCACIÓN Y  
SEGURIDAD SOCIAL**

**= “NEW DEAL”**



# Bibliografía

- Gallo T. Miguel Ángel, “Guerras, crisis y revolución 1914 – 1945, Historia Universal Moderna y Contemporánea II. Del Imperialismo al Neoliberalismo, México, ediciones Quinto Sol, 2003.
- Sitio web:

[www.portalplanetasedna.com.ar/crisis29.htm](http://www.portalplanetasedna.com.ar/crisis29.htm)